



24 Timothy Place, Pool Close, West Molesey, KT8 2HR

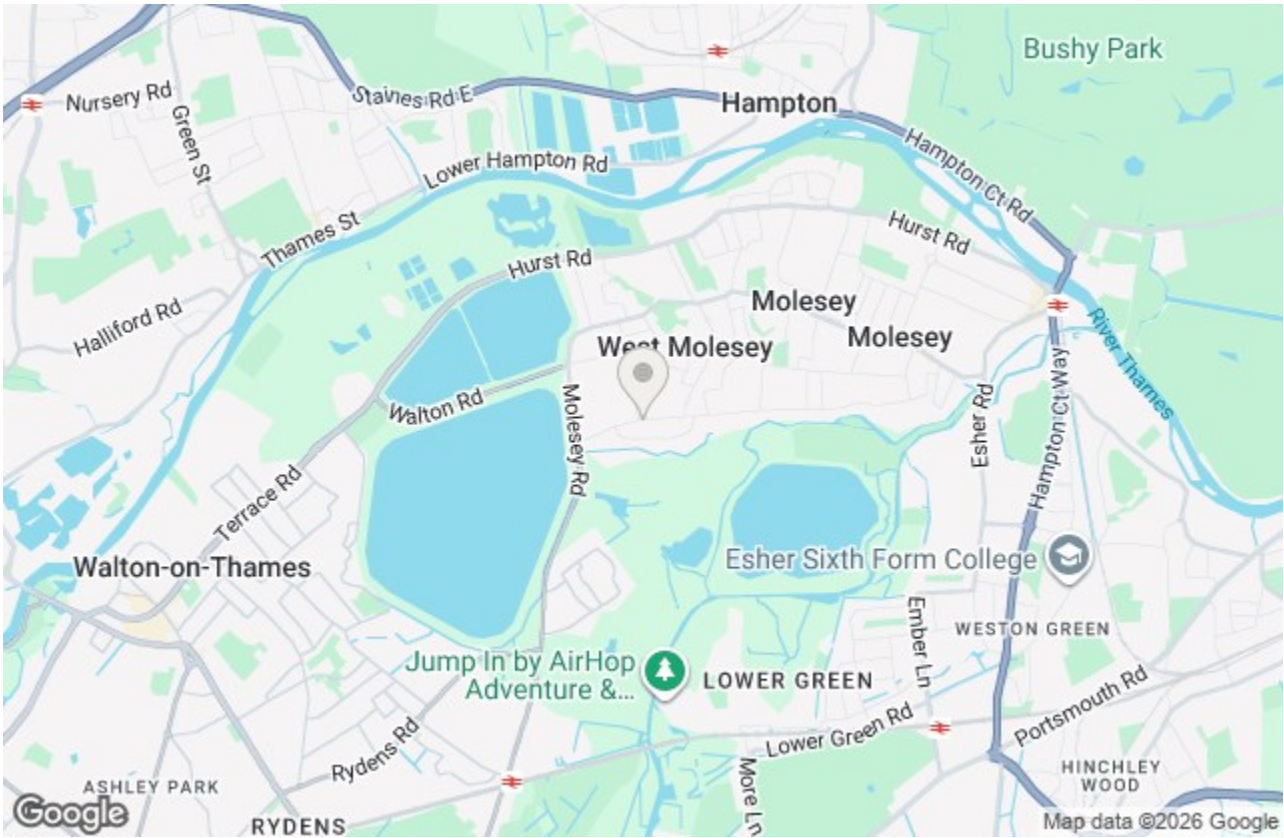
Energy Efficiency Rating		
	Current	Potential
Very energy efficient - lower running costs		
(92 plus) A		
(81-91) B		
(69-80) C		
(55-68) D		
(39-54) E		
(21-38) F		
(1-20) G		
Not energy efficient - higher running costs		
England & Wales	EU Directive 2002/91/EC	

Environmental Impact (CO ₂) Rating		
	Current	Potential
Very environmentally friendly - lower CO ₂ emissions		
(92 plus) A		
(81-91) B		
(69-80) C		
(55-68) D		
(39-54) E		
(21-38) F		
(1-20) G		
Not environmentally friendly - higher CO ₂ emissions		
England & Wales	EU Directive 2002/91/EC	

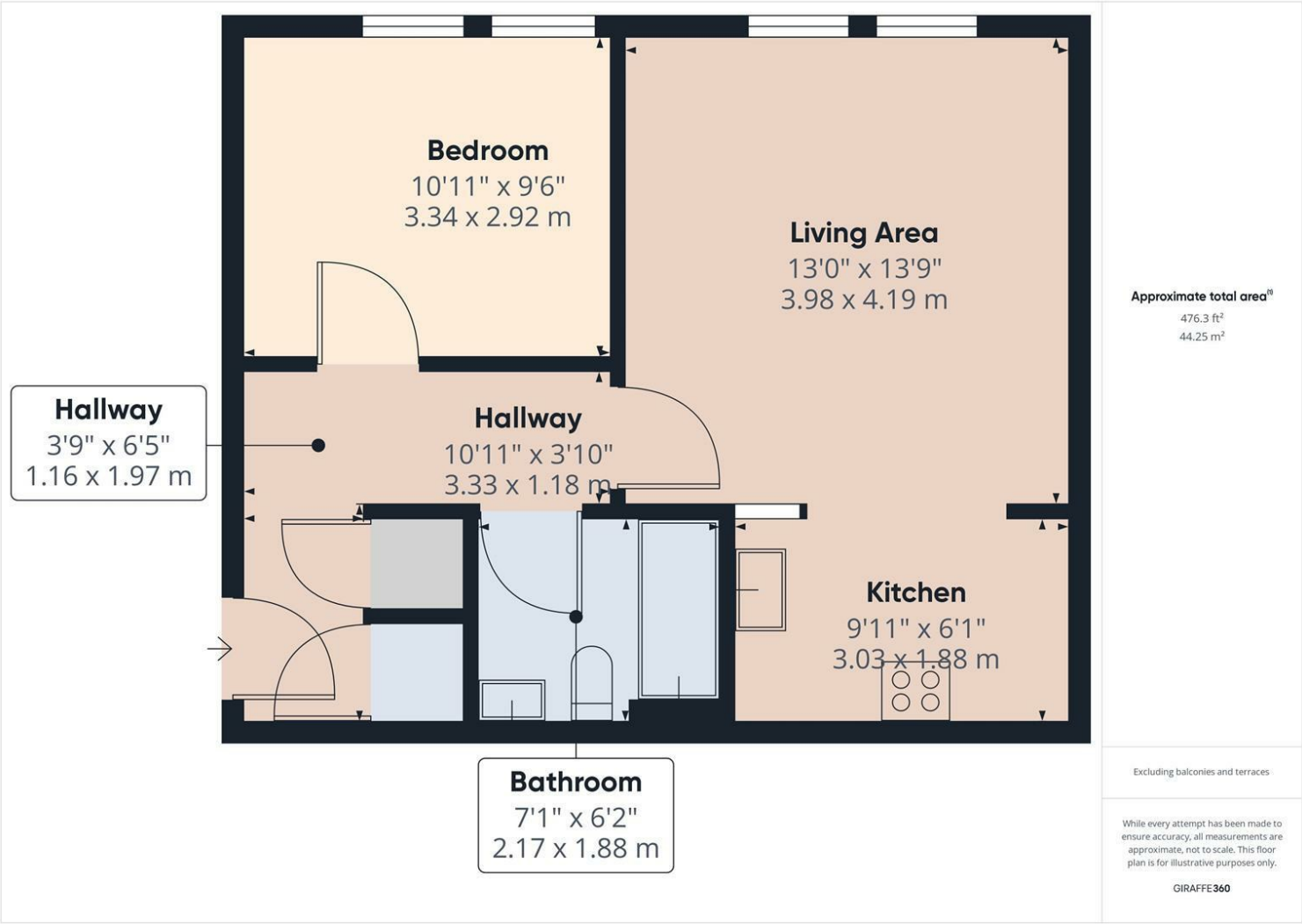


Per Calendar Month £1,400 Per Calendar Month

We are delighted to offer this well presented ground floor apartment located in the popular Timothy Place with the advantage of residents car park to the rear. Available middle of March, this property comes part furnished to include a double bed and sofa. The accommodation is nicely presented throughout and includes a communal entrance hallway with security entry phone system, welcoming entrance hall with ample storage, good size double bedroom, modern three piece family bathroom with white suite and heated towel rail and bright and airy open plan living room with feature fireplace and archway to the modern fitted kitchen. Internals viewings are highly recommended. Call 01932 222266 to arrange a viewing. Council tax band C. AVAILABLE NOW.



Pool Close, West Molesey, KT8 2HR



- GROUND FLOOR APARTMENT
- CLOSE TO LOCAL AMENITIES
- MODERN BATHROOM & KITCHEN
- PART FURNISHED
- PRIVATE CAR PARK
- ENTRYPHONE SYSTEM
- AVAILABLE MID MARCH
- COUNCIL TAX BAND C

This plan is a representation of the property and measurements, where given, are approximate. None of the fixtures and fittings have been tested by us. These details are thought to be materially correct but we cannot guarantee there are no error and emissions and they do not form part of any contract